



Sika SolaRoof®

COMPREHENSIVE, INTEGRATED
SOLAR SOLUTION FOR
THERMOPLASTIC ROOFS

Sika SolaRoof®

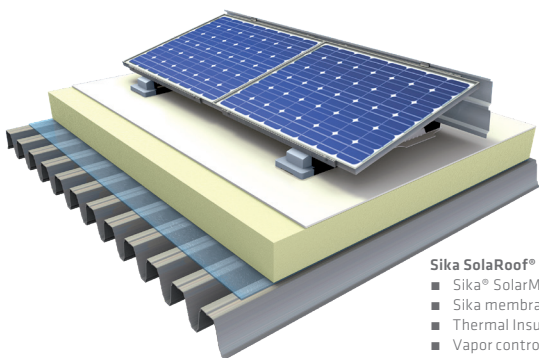
GOING ABOVE AND BEYOND THE TRADITIONAL RACKING SYSTEMS

Sika SolaRoof® IS A COMPREHENSIVE, INTEGRATED SOLUTION combining the proven performance of Sika's roof assemblies with Sika® SolarMount-1. This results in an innovative, non-penetrating engineered solution for long-term securement of rooftop photovoltaic modules.

The injection molded Sika® SolarClick welding flange is a key component of the Sika® SolarMount-1. These are welded to the membrane using standard hot-air welding equipment. This means that the installation of the Sika SolaRoof® system does not require any roof membrane penetrations, eliminating potential leakage points and reducing maintenance. The robust and safe connection eliminates the potential for roof damage due to lateral movement that can occur in ballasted systems relying on friction, and there is no need for slip sheets with the system. Ballast is typically not required for the aerodynamic SSM1 mounting system, which makes it ideal even for most lightweight roof structures. Typical loading imposed on the roof is 10 – 18 kg/m², incl. PV modules.

Sika SolaRoof®

The roof build-up with Sika® SolarMount-1 has been defined and officially tested. Approvals for SSM1 are available in several countries.



Sika SolaRoof® build-up:

- Sika® SolarMount-1
- Sika membrane
- Thermal Insulation
- Vapor control layer
- Roof structure (e.g. metal deck, concrete)

Sika® SolarMount-1 and Sika® SolarClick

The innovative and patented mounting solution for flat roofs with defined load transfer into the roof structure. PV modules and cables are not part of SSM1.



Welding of Sika® SolarClick to the membrane

Sika SolaRoof® is the complete PV solution



Comprehensive. Sika membrane and Sika® SolarMount-1 are one integrated and thoroughly tested system



Stable Position. Sika® SolarMount-1 is secured directly to the roofing membrane, eliminating the potential for damage



Non-penetrating. With the Sika® SolarClick welding flange, there are no penetrations as potential leakage points



Lightweight. Ballast is typically not required, making the system ideal for lightweight roof structures



Versatile. Sika® SolarMount-1 can be assembled by just a few components in a variety of configurations, with either south or east-west orientations



Designed. PV module layout, wind load calculations and financial calculations are provided by trusted partner Centroplan

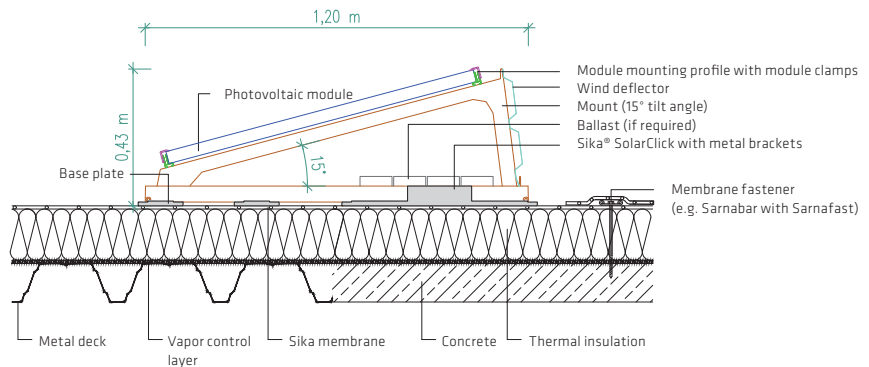


Reliability. Incorporates the proven performance of Sika roof assemblies with the innovative Sika® SolarMount-1 for long-term securement

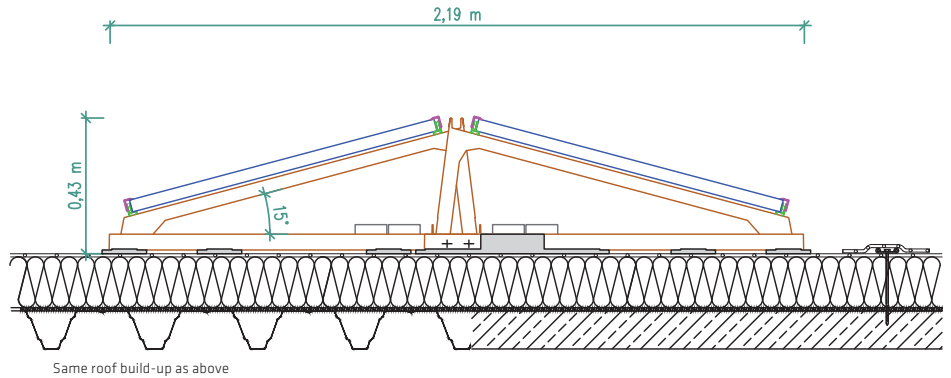
Sika SolaRoof®

ONE SYSTEM FOR ALL SITUATIONS ON FLAT ROOFS

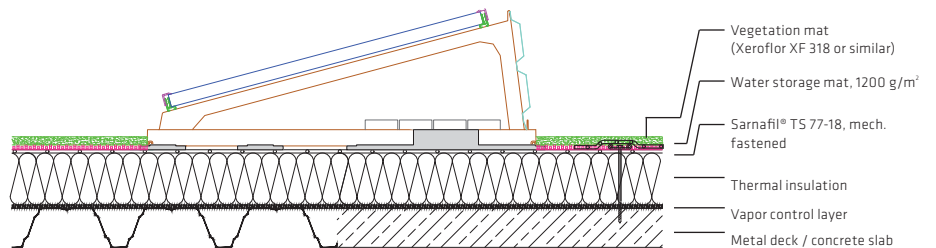
South orientation



East-West orientation



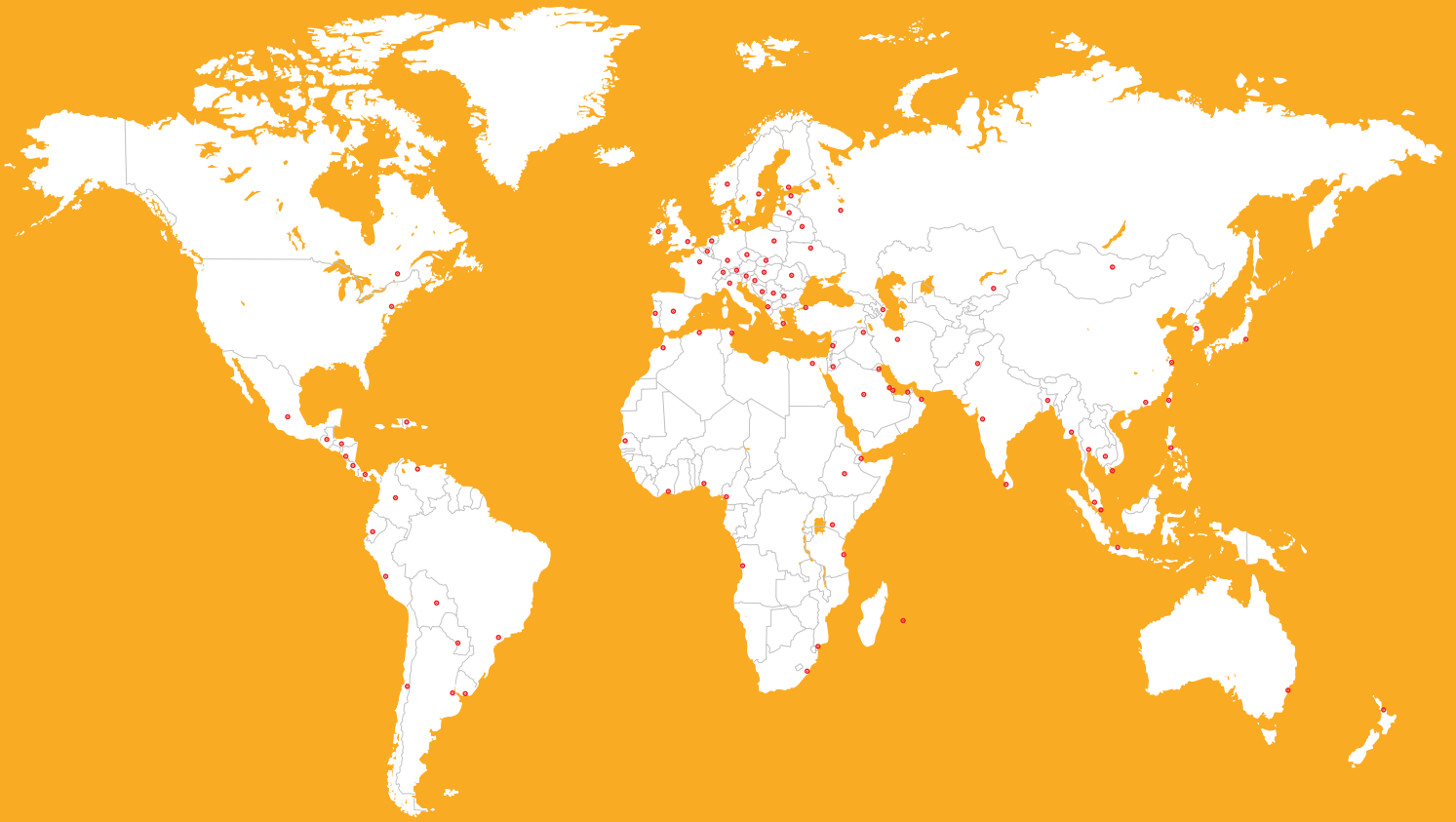
Lightweight green roofs



Lightweight green roof build-up*: The green roof build-up is installed between the PV module rows only. The roof surface beneath the PV modules remains uncovered in order to avoid uncontrolled plant growth and the associated high maintenance costs.

* Local regulations for green roofs and fire protection must be observed

GLOBAL BUT LOCAL PARTNERSHIP



WE ARE SIKA

Sika is a specialty chemicals company with a leading position in the development and production of systems and products for bonding, sealing, damping, reinforcing and protecting in the building sector and the motor vehicle industry. Sika's product lines feature concrete admixtures, mortars, sealants and adhesives, structural strengthening systems, industrial flooring as well as roofing and waterproofing systems.

Our most current General Sales Conditions shall apply. Please consult the most current local Product Data Sheet prior to any use.



SIKA SERVICES AG
Tueffenwies 16
CH-8048 Zurich
Switzerland

Contact
Phone +41 58 436 40 40
www.sika.com

BUILDING TRUST

