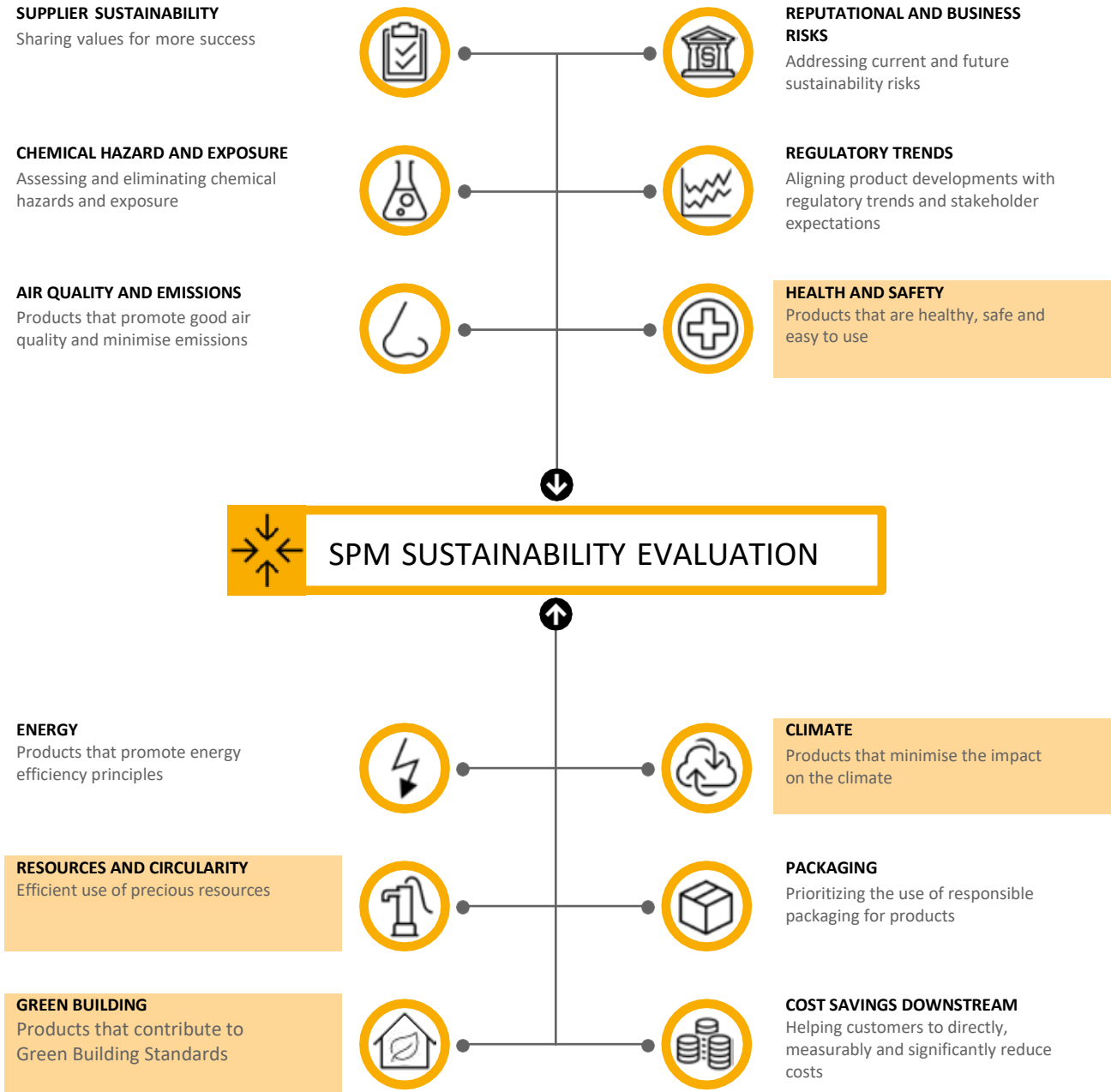


SUSTAINABILITY FACT SHEET

Sika MonoTop®-107 Plus ES

Sustainability Portfolio Management (SPM) is the mechanism used by Sika in order to evaluate and classify its products in defined market segments in terms of Performance and Sustainability. The outcome of the SPM evaluation is a portfolio of “Sustainable Solutions” – products with combined significant Sustainability and Performance benefits.

The evaluation criteria that fall under the sustainability category of SPM are presented in the infographic below.



Sika MonoTop®-107 Plus ES

MORE PERFORMANCE
MORE SUSTAINABLE

MORE PERFORMANCE — MORE SUSTAINABLE

MORE PERFORMANCE MORE SUSTAINABLE stands for Sika's product innovation through a unique combination of higher performance and proven sustainability benefits. A Sustainable Solution is a product in a given application which combines superior performance with a significant sustainability contribution within its technology range for our customers.

PRODUCT CHARACTERISTICS AND BENEFITS

Sika MonoTop®-107 Plus ES is a new high performing and more sustainable one-component waterproofing mortar, cement based, with selected aggregates, recycled material and admixture. Sika customers benefit from:

- **CLIMATE:** 35% reduced carbon footprint in comparison to internal reference product
- **HEALTH AND SAFETY:** cement replacement reduces the exposure during application to harmful substances
- **RESOURCES AND CIRCULARITY:** includes SCM that contributes to circular economy
- **GREEN BUILDING:** direct contribution to LEED v4/V4.1 credits and to BREEAM ES assessment issues

CLIMATE: REDUCED CARBON FOOTPRINT OF PRODUCT

The carbon footprint of Sika MonoTop®-107 Plus ES is 35% lower than the carbon footprint of the internal reference cementitious waterproofing mortar¹. The reduction in the carbon footprint of Sika MonoTop®-107 Plus ES was achieved by replacing cement with SCM in the formulation.

Basis for the LCA calculation is:

- A Carbon Footprint Study was conducted to generate the carbon footprint reductions presented in this factsheet based on ISO 14044
- The reduction in carbon footprint presented is based on IPCC AR6 GWP100 incl. biogenic CO₂ as well as land use and land use change (luluc)
- The goal of the LCA was to compare the raw material composition of this product, produced in Europe, with the internal reference to evaluate the carbon footprint reduction of the improved formulation. The comparison was calculated on a per "kg" basis as the two formulations are functionally equivalent.
- The life cycle stage included in the calculation is the production of raw materials (cradle to raw material) because the focus of the product development was to improve the formulation, which represents the largest share of the product carbon footprint. Transport and manufacturing processes are similar for both products.
- The LCI used for the LCA calculation consists of secondary data from Sphera MLC Databases which are generic or average representations of the raw materials, as well as primary data from suppliers if available. The regional, technological and time related representativeness of the LCA results are fair².

RESOURCES AND CIRCULARITY: RECYCLED CONTENT

Sika MonoTop®-107 Plus ES contains recycled content of 15,75%. The recycled material is sourced from by-product from iron and steel production and mineral resources

HEALTH AND SAFETY

Due to its improved Environment Health and Safety (EHS) composition, Sika MonoTop®-107 Plus ES has reduced its labelling as a dangerous good. As a result of its improved classification and labelling, Sika MonoTop®-107 Plus ES may

¹ The comparative reference product is the best-selling product in the Product Technology Application Combination (PTAC), a unique combination of the application and market segment, brand family and technology of a given product, which ensures a homogenous approach, as products in a well-defined segmentation will have a similar sustainability profile. More details can be provided upon request.

² The LCA study has not been independently reviewed for conformance with ISO 14044 and 14067. The calculation has been conducted involving Sika's R&D and LCA specialists under consideration of Sika's internal quality assurance processes.

SUSTAINABILITY FACT SHEET

Sika MonoTop®-107 Plus ES

be used in do-it-yourself (DIY) applications in addition to the traditional professional applications of standard reference materials. For further information, refer to the Safety Data Sheet (SDS).

GREEN BUILDING: MEETS LEED V4/V4.1 & BREEAM ES REQUIREMENTS

Sika MonoTop®-107 Plus ES is part of the Sika LEED product portfolio and contributes toward satisfying three credits under LEED v4/v4.1. More details about the contribution to each credit are given in the respective Sika LEED Attestations.

- LEED v4/V4.1 MR Environmental Product Declarations (Option 1): Sika MonoTop®-107 Plus ES has a generic EPD and contributes toward satisfying 1 point.
- LEED v4/V4.1 MR Sourcing of Raw Materials: Sika MonoTop®-107 Plus ES has a 15,75% post-consumer recycled content and contributes toward satisfying 1-2 points.
- LEED v4/V4.1 MR Material Ingredients (Option 2): Sika MonoTop®-107 Plus ES complies with the REACH Optimization Option for projects outside the US and contributes toward satisfying 1 point.

Sika MonoTop®-107 Plus ES is part of the Sika BREEAM product portfolio and contributes to 5 assessment issues of BREEAM ES VIVIENDA 2020 Y BREEAM NUEVA CONSTRUCCIÓN 2015. More details about the contribution to each assessment issue are given in the respective Sika BREEAM Attestation

Direct contribution to assessment issues:

- Mat 03 Responsible sourcing of construction products: The production of Sika MonoTop®-107 Plus ES is covered by the independently verified Environmental Management System (EMS) ISO 14001 of Sika and contributes toward up to 3 credit v4/V4.1 MR Environmental Product Declarations (Option 1): Sika MonoTop®-107 Plus ES has a generic EPD and contributes toward satisfying 1 point.
- Gst 03: Working site impact: Sika MonoTop®-107 Plus ES is distributed in pallets made of wood with certified and legal origin and contributes toward 1 credit.

Indirect contribution to assessment issues

- Mat 01 Environmental Impacts from construction products – Building Life Cycle Assessment Sika MonoTop®-107 Plus ES has a good environmental performance and contributes toward 7/6 credits.
- Mat 05 Designing for durability and resilience: Sika MonoTop®-107 Plus ES contributes to the protection of exposed/vulnerable parts of the building from material degradation and contributes toward 1 credit
- Inn 01 Innovation: Sika MonoTop®-107 Plus ES offers an innovation to the construction sector as it offers sustainability benefits in terms of a Reduced Carbon footprint and promotes circular economy, and therefore contributes toward 10 credits.

The information contained herein and any other advice are given in good faith based on Sika's current knowledge and experience of the products when properly stored, handled and applied under normal conditions in accordance with Sika's recommendations. The information only applies to the application(s) and product(s) expressly referred to herein and is based on laboratory tests which do not replace practical tests. In case of changes in the parameters of the application, such as changes in substrates etc., or in case of a different application, consult Sika's Technical Service prior to using Sika products. The information contained herein does not relieve the user of the products from testing them for the intended application and purpose. All orders are accepted subject to our current terms of sale and delivery. Users must always refer to the most recent issue of the local Product Data Sheet for the product concerned, copies of which will be supplied on request.